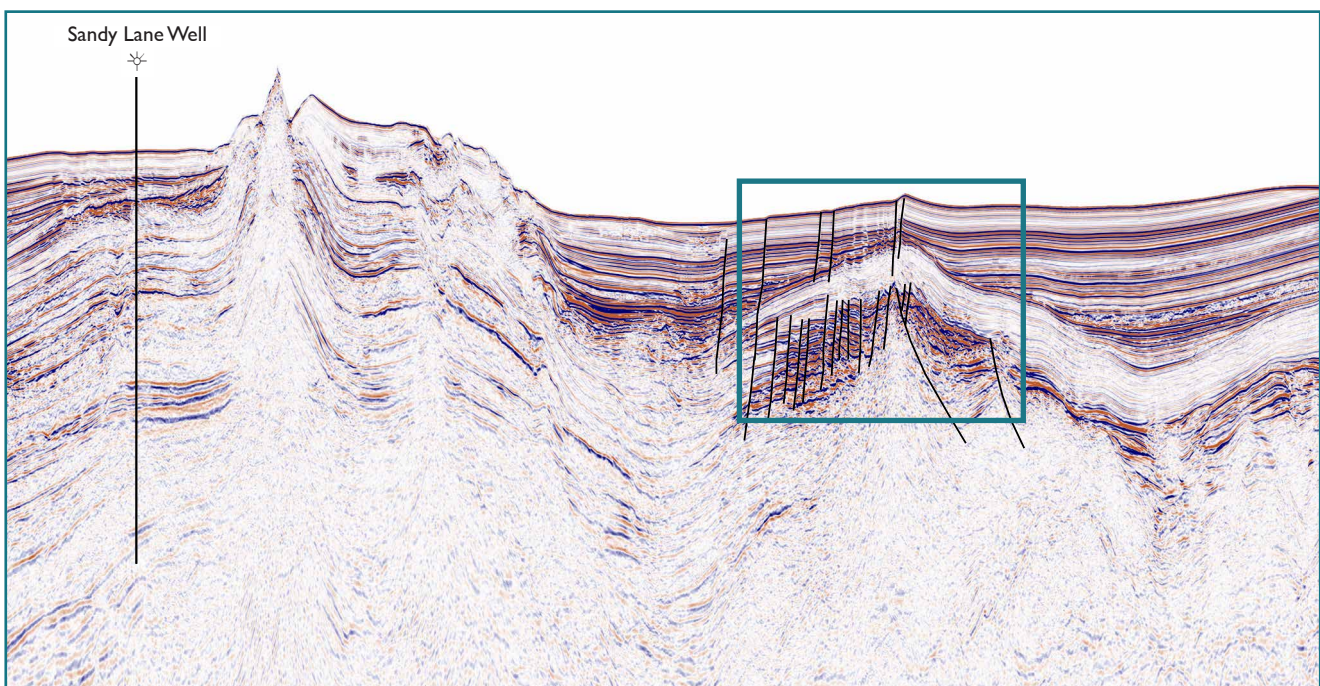
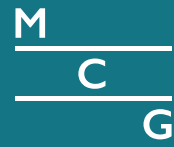


BARBADOS

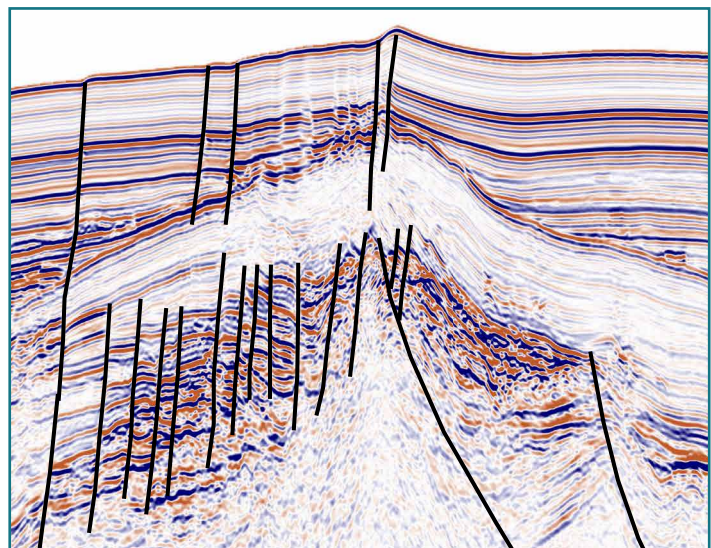
MultiClient Geophysical (MCG) has in cooperation with the Government of Barbados acquired 6 837 km modern long-offset 2D seismic data in the most prolific parts of the Barbados Off-shore License Area.



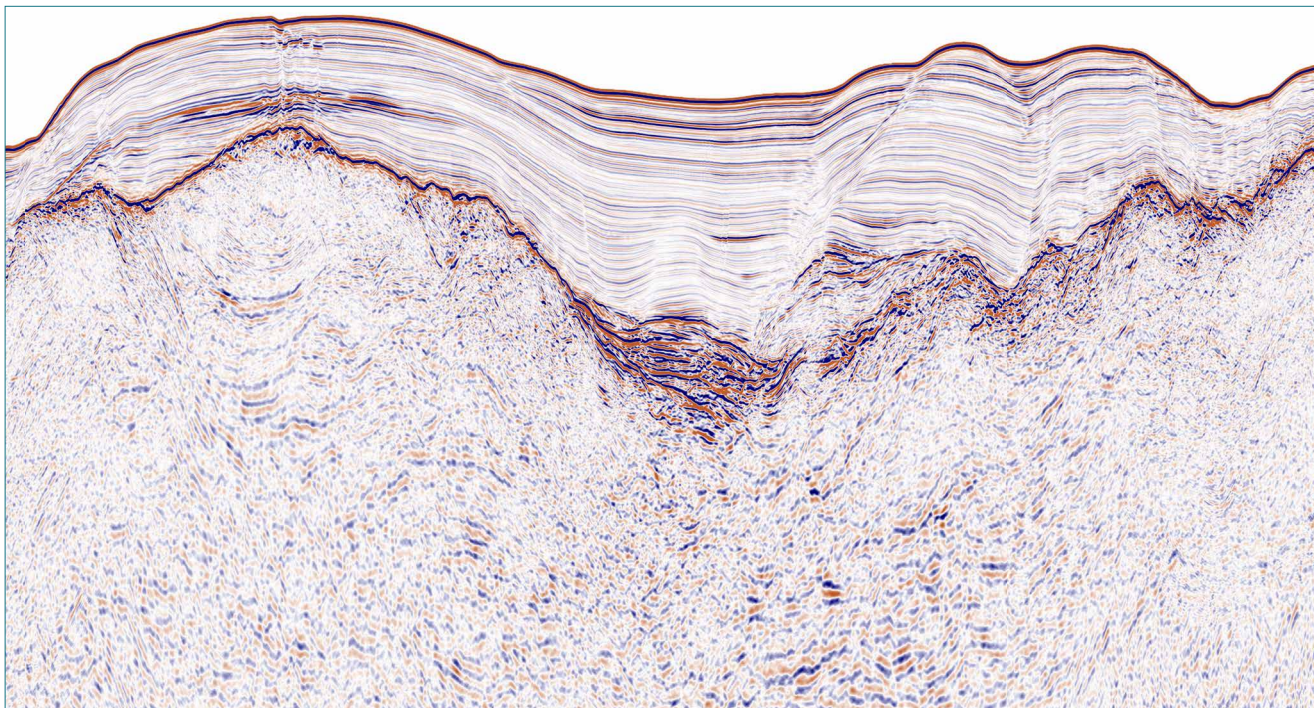
Regional evaluation and prospect mapping

The MCG Barbados MC2D seismic dataset is a modern dataset for regional evaluation and prospect mapping of the very attractive Barbados offshore license area. The survey covers the Barbados Trough, the Tobago Basin and crosses the Barbados Ridge between the basins.

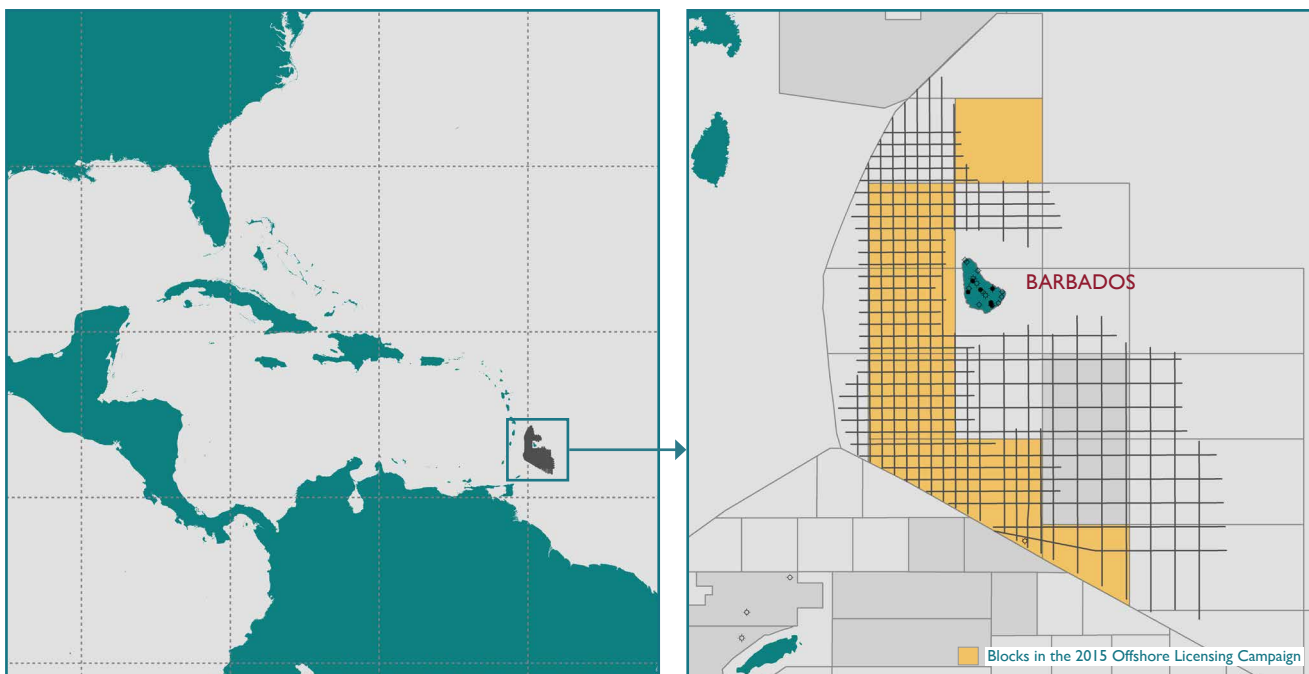
The data was acquired in 2012 and in 2013 in a 14 x 14 km and 7 x 7 km prospect grid, using a 10 500 m streamer, a 4 230 cu. in. energy source and 14 seconds recording length. The acquired data was then run through modern PSTM processing. In addition to the seismic data gravity and magnetic data is also available.



BARBADOS



The Barbados survey was acquired in a 14 x 14 km and 7 x 7 km grid for regional evaluation and prospect mapping.



Please contact us for more information

Kenneth W. Mohn
kenneth.mohn@mcg.no

Tom Wolden
tom.wolden@mcg.no

