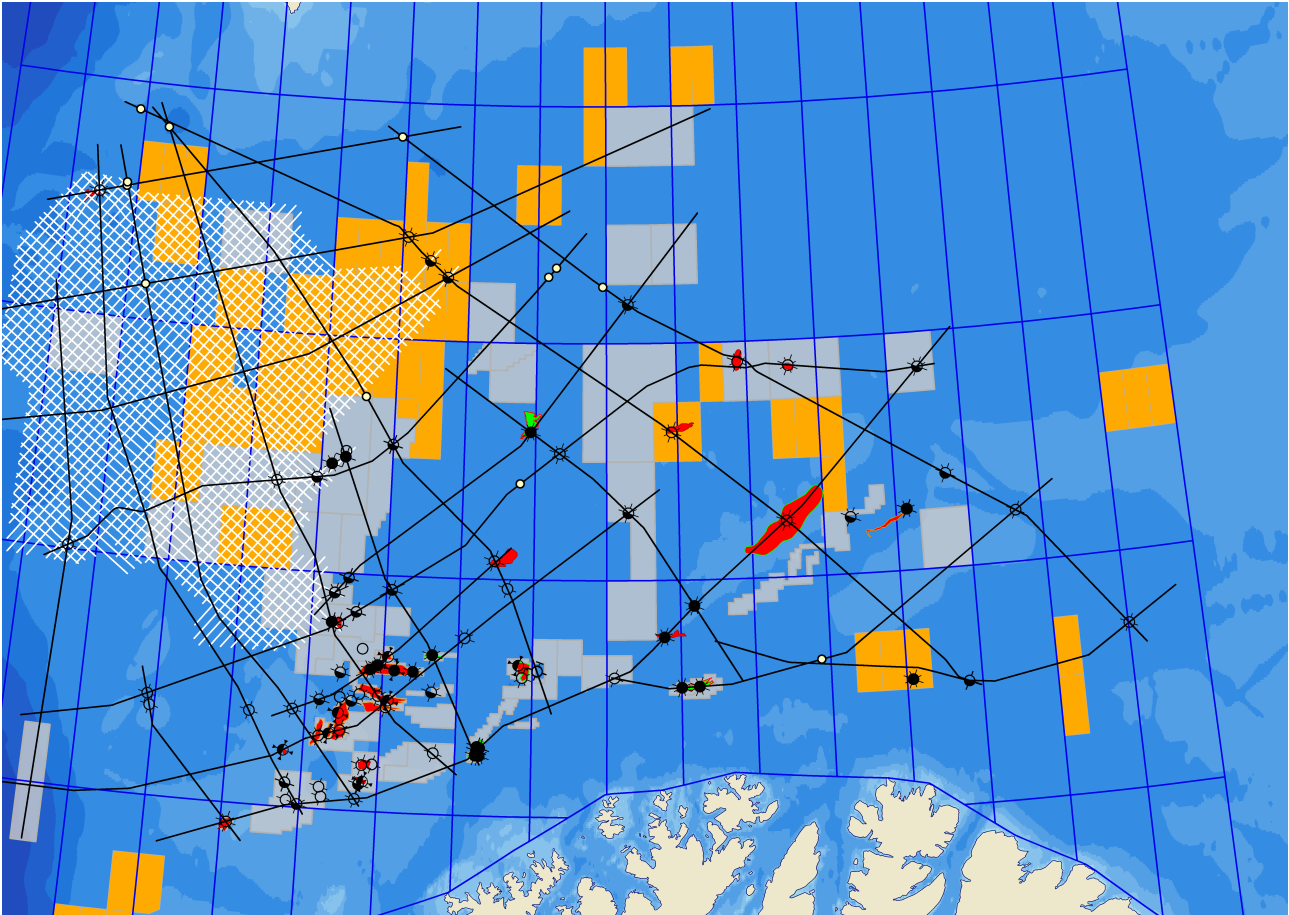


MC2D available in the Barents Sea



□ Bjørnøya Basin ■ Barents Super Tie ■ Blocks for public hearing

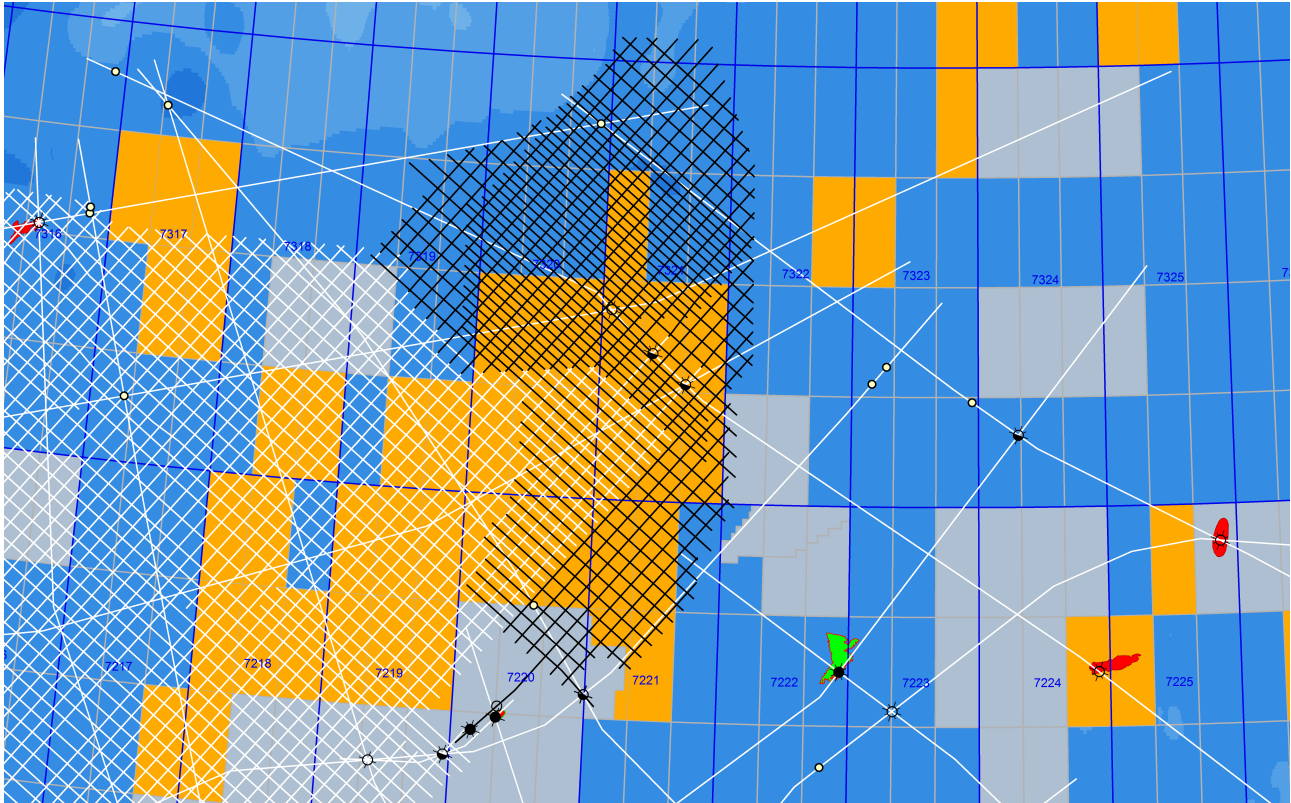
Barents Super Tie 6 464 km high-quality long-offset MC2D data
Ties 64 exploration wells and 11 IKU shallow cores

Bjørnøya Basin 4 × 4 km consistent grid for prospect mapping
14 600 km high-quality long-offset MC2D data

For more information contact

Tor Åkermoen tor.akermoen@mcgeophysical.no
Per Kulseth Dahl per.dahl@mcgeophysical.no

MCG 2012 Barents Sea program



□ Available MCG MC2D ■ MCG 2012 Barents Sea program ■ Blocks for public hearing

5 400 km continuation of the Bjørnøya Basin grid

Fingerdjupet 4 250 km with 2×4 km priority area
fully processed and available end of June

Loppa Fault Zone 1 150 km

For more information contact

Tor Åkermoen tor.akermoen@mcgeophysical.no

Per Kulseth Dahl per.dahl@mcgeophysical.no